



CORPORATEKEYS
A U S T R A L I A



**Property
Owners**

**Have you
considered
the
Corporate
Rental
Model?**



Who are Corporate Keys?

Corporate Keys specialises in providing high quality fully furnished accommodation for corporate executives, relocating employees and project teams. Strict quality control and first class customer service has gained Corporate Keys the reputation as a leading corporate accommodation provider.

Responding to our clients needs we provide three distinct levels of property designed to meet the lifestyle and budget of our guests. Our minimum stay is 28 nights with an average stay of 3 months.



The Corporate Rental Model Key Benefits for Landlords

- No management fee
- No letting fee
- No inspection fees
- No sub-charges on top of maintenance costs
- No lease preparation fee
- Occupants are corporate executives and employees
- Regular service cleaning, vacate cleaning and maintenance is handled by Corporate Keys staff



Is Your Property Suitable?

It is essential that all property's exceed our clients' expectations - this will ensure high occupancy for your investment. If your property meets the following criteria, please contact us today for a no obligation appraisal.

Location – Our clients prefer apartments and townhouses in the CBD and Southbank. Demand also exists in Port Melbourne, St Kilda Road, Docklands, South Yarra and Carlton.

Close to Shops and Public Transport

Heating and Cooling

Dishwasher

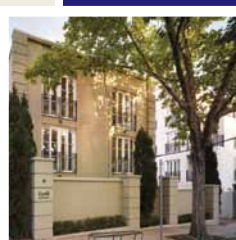
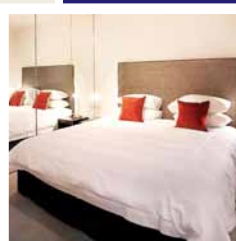
Internal Laundry - Not communal.

Parking – One car park space is preferred.

Facilities – Gym and pool are preferred but not essential.

Lift Access – Required for properties above ground floor,

Furniture and Inventory – Must meet Corporate Keys minimum standards. Contact us for our 'Guide For Owners' and for our furniture solutions.





CORPORATEKEYS
A U S T R A L I A



**Contact our Corporate Rental Manager
for a copy of our “Guide for Owners”**

For more information contact:

Corporate Keys Australia

K113, 63 Turner Street Port Melbourne VIC 3207 Australia

P +61 3 9279 7200 F +61 3 9646 0474

info@corporatekeys.com.au www.corporatekeys.com.au