



# CORPORATE GUESTHOUSE

Proudly brought to you by Corporate Keys

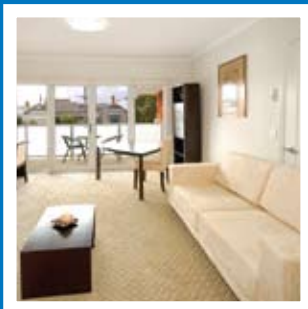


## Corporate Guest House by Corporate Keys

Welcome to a new and unique opportunity for luxury inner Melbourne living at well below other corporate accommodation, serviced apartment and hotel prices.

Corporate Guest Houses are purpose-built properties which accommodate up to 12 people. Opportunities exist to rent one room, several rooms in one Guest House, an entire Guest House or a number of Guest Houses in close proximity to house your entire project team.

Each property has three types of rooms, and caters for single, double or twin-share occupancy. Rooms are generously sized and well furnished. Meals, entertainment and dining facilities are shared between all residents. There are five bathrooms in each Corporate Guest House, for sharing between the Executive and Club rooms, whilst the Ambassador Suite has its own ensuite. There is an alfresco entertainment area and barbecue in a garden setting, a well equipped gymnasium and ample free parking.



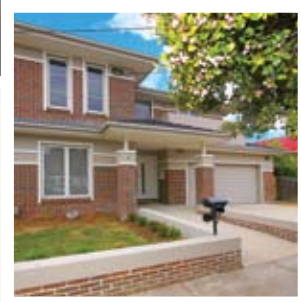
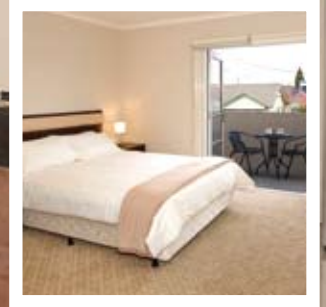
Our luxury Guest Houses are situated in the leafy inner-suburbs of Brunswick and Brunswick East, less than five kilometres (three miles) from Melbourne's central business district. All properties are within 300 metres (less than 1/4 mile) of a tram stop and are close to other public transport, major shopping precincts and many cosmopolitan dining and entertainment choices.

Corporate Guest Houses are available for the corporate, commercial, entertainment and industrial sectors, public service and not-for-profit organisations. Typically, residents are employees involved in various projects, training or other business related activities and have been transferred to Melbourne for medium (from one month) to long term stays.

Corporate Guest Houses are an excellent way for companies to reduce their staff relocation costs and project housing budget whilst ensuring staff are comfortably housed.

The minimum stay is 28 nights. Call now to enquire and secure your booking.

# Luxury

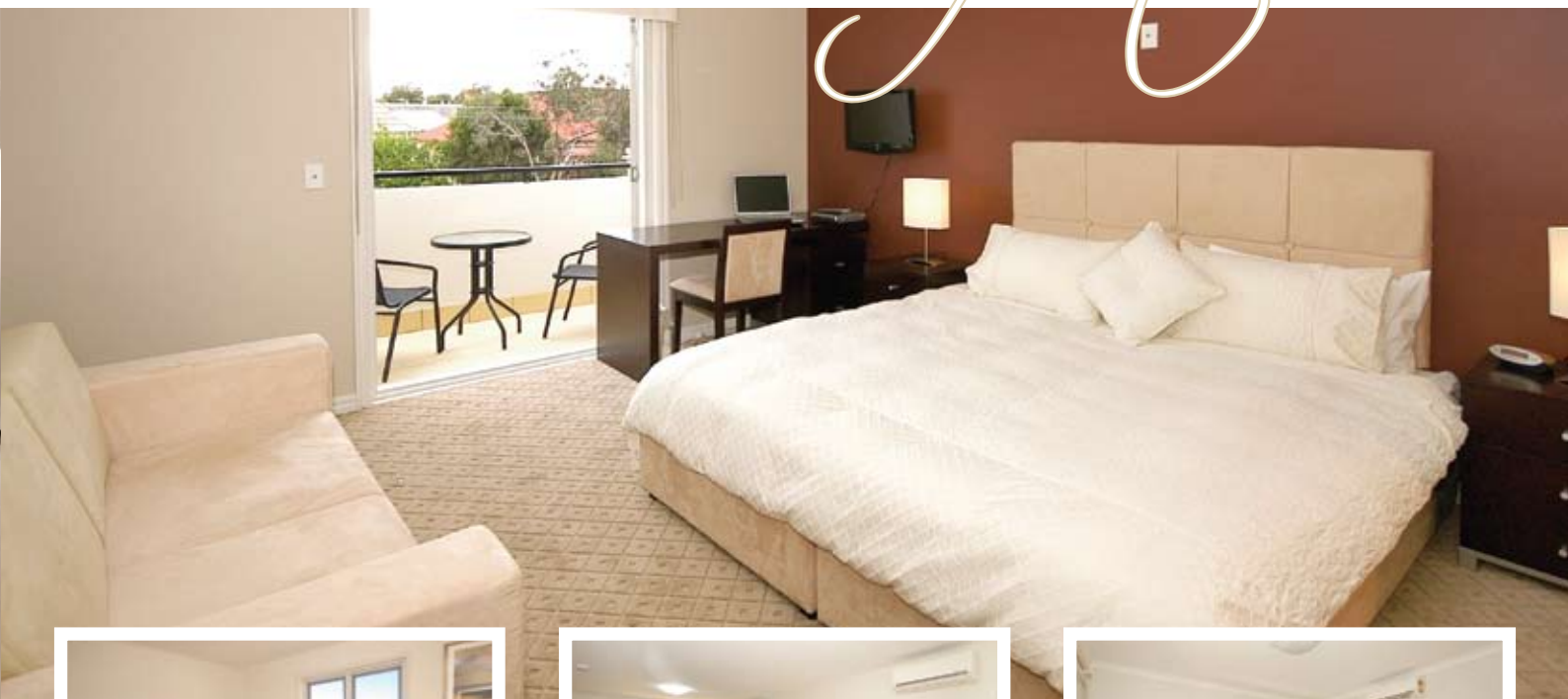


## Features

	Executive	Club	Ambassador
Single	YES	YES	YES
Double Share	-	YES	YES
Twin Share	-	YES	YES
Minimum room size	3.6 x 3.6 metres	7.3 x 3.7 metres	6.3 x 4.2 metres
Quality furnishings	YES	YES	YES
LCD Flat Screen Television	YES	YES	YES
DVD Player	YES	YES	YES
CD Player	YES	YES	YES
Writing desk, chair and lamp	YES	YES	YES
Independent control heating and cooling	YES	YES	YES
Two-seater sofa	-	YES	YES
Compact Dining setting	-	YES	-
En-suite with shower, vanity and toilet	-	-	YES
Private balcony with outdoor café table and chairs	-	-	YES
Tariff per room per week	\$395	\$495 (single) \$530 (share)	\$550

Opportunities exist to rent one room, several rooms in one Guest House, an entire Guest House or a number of Guest Houses in close proximity to house your entire project team.

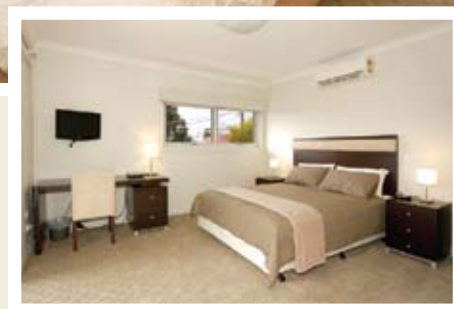
# Comfort



EXECUTIVE ROOM



CLUB ROOM



AMBASSADOR SUITE

## Executive Rooms - Single

Exclusive single rooms, suitable for one person, are generously proportioned (minimum size of 3.6 metres by 3.6 metres). Exclusive rooms are tastefully decorated in warm timber tones and are equipped with quality fixtures and fittings. Each room features a king-single sized bed, LCD flat-screen television, DVD player, CD player and independently controlled heating and air conditioning. Every Executive room is soundproofed to ensure maximum privacy and comfort.

## Club Rooms - Single, Double or Twin

Club rooms are suitable for individuals or for sharing – either by couples or two friends. Available in double and twin bed format, Club rooms are spacious (a minimum of 3.7 metres by 7.3 metres), which is about twice the size of an Executive single room. Club rooms are tastefully decorated in warm timber tones and are equipped with quality fixtures and fittings. Each room features two king-single sized beds or one king double sized bed, a compact dining setting for two people, an LCD flat-screen television, DVD player, CD player and independently controlled heating and air conditioning. Every Club room is soundproofed to ensure maximum privacy and comfort.

## The Ambassador Suite - Single

In each Corporate Guest House there is one Ambassador Suite. This generously proportioned and sophisticated room is twice the size of an Executive single room and features an en-suite, (some have a bathtub in addition to a shower), walk-in robes and a spacious balcony (2 metres by 4 metres), equipped with a café style dining setting and overlooking a leafy Melbourne streetscape. All Ambassador Suites are tastefully decorated in warm timber tones and are equipped with quality fixtures and fittings. Each room features two king-single beds or double sized bed, LCD flat-screen television, DVD player, CD player and independently controlled heating and air conditioning. Every Ambassador Suite is soundproofed to ensure maximum privacy and comfort.



# CORPORATE GUESTHOUSE

Proudly brought to you by Corporate Keys

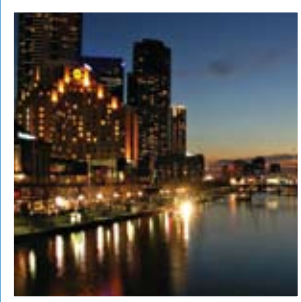


*Enjoy*



## Dining and entertaining

Melbourne's temperate climate allows for a substantial outdoor lifestyle. To take advantage of this, all Corporate Guest Houses by Corporate Keys have expansive alfresco outdoor entertaining and dining facilities. Each property has floor to ceiling folding glass doors leading from the main dining room to an attractive garden patio setting. This spacious environment boasts a large dining table and chairs, a BBQ and outside gas heaters for all year enjoyment.



## Gymnasium Facilities

Every Corporate Guest House has a dedicated gymnasium, equipped with commercial grade apparatus, a plasma television and a sound system. Gym membership is free.



## Transport

Each Corporate Guest House is within 300 metres of a tram-stop and easily accessible by trains and buses. Inner Melbourne has an extensive and regular train, tram and bus network. Trams are frequent throughout the day, and a normal city trip takes 10-15 minutes.

## Locations

**All locations are based in Melbourne Victoria.**

81 Union Street Brunswick  
4 Carnarvon Street Brunswick  
166 Blyth Street Brunswick East  
228 Glenlyon Road Brunswick East  
230 Glenlyon Road Brunswick East  
58 Clarence Street Brunswick East  
70 John Street Brunswick East  
6 Peers Street Brunswick East

## Bookings & Enquiries

ph: +61 3 9279 7200 fax: +61 3 9646 0474 K113, 63 Turner Street Port Melbourne Victoria 3207 Australia  
info@corporatekeys.com.au www.corporatekeys.com.au